



**Höje å**

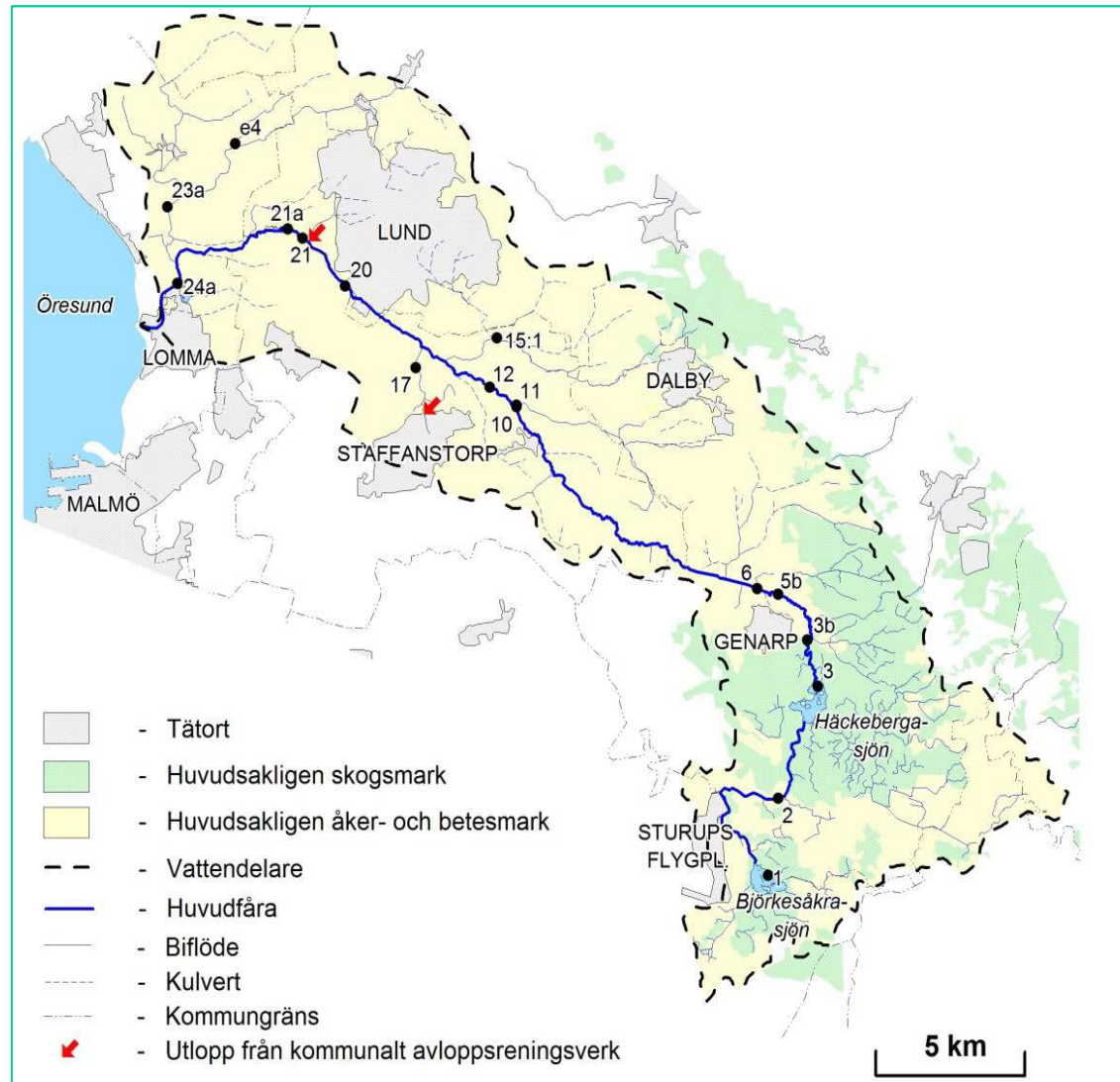
**Recipientkontroll 2015**

**Höje å  
vattenråd**

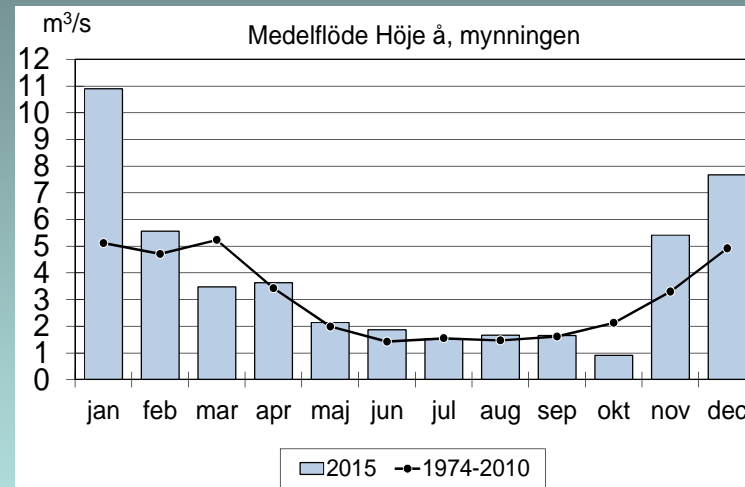
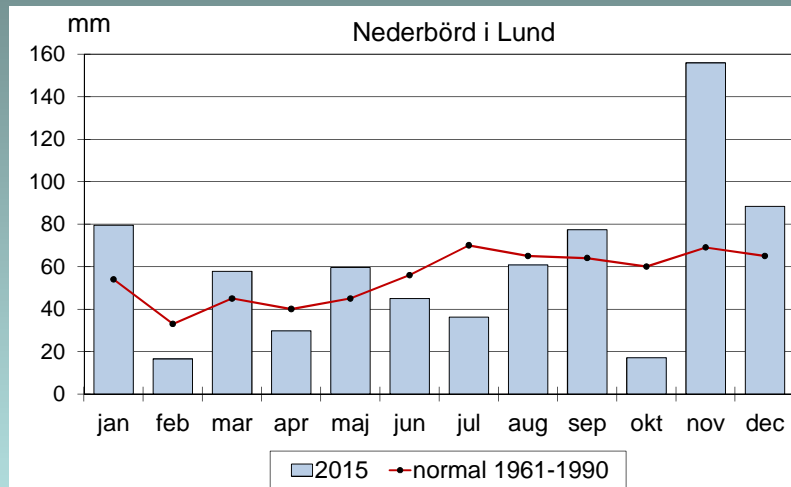
**Ekologgruppen**

## Provtagningsprogram 2015

- Vattenkemiskt program 14 pkt
- Transportprogram 2 pkt
- Sjöar 2 pkt
  
- Bottenfauna 4 pkt
- Plankton 2 pkt
- Påväxt 2 pkt



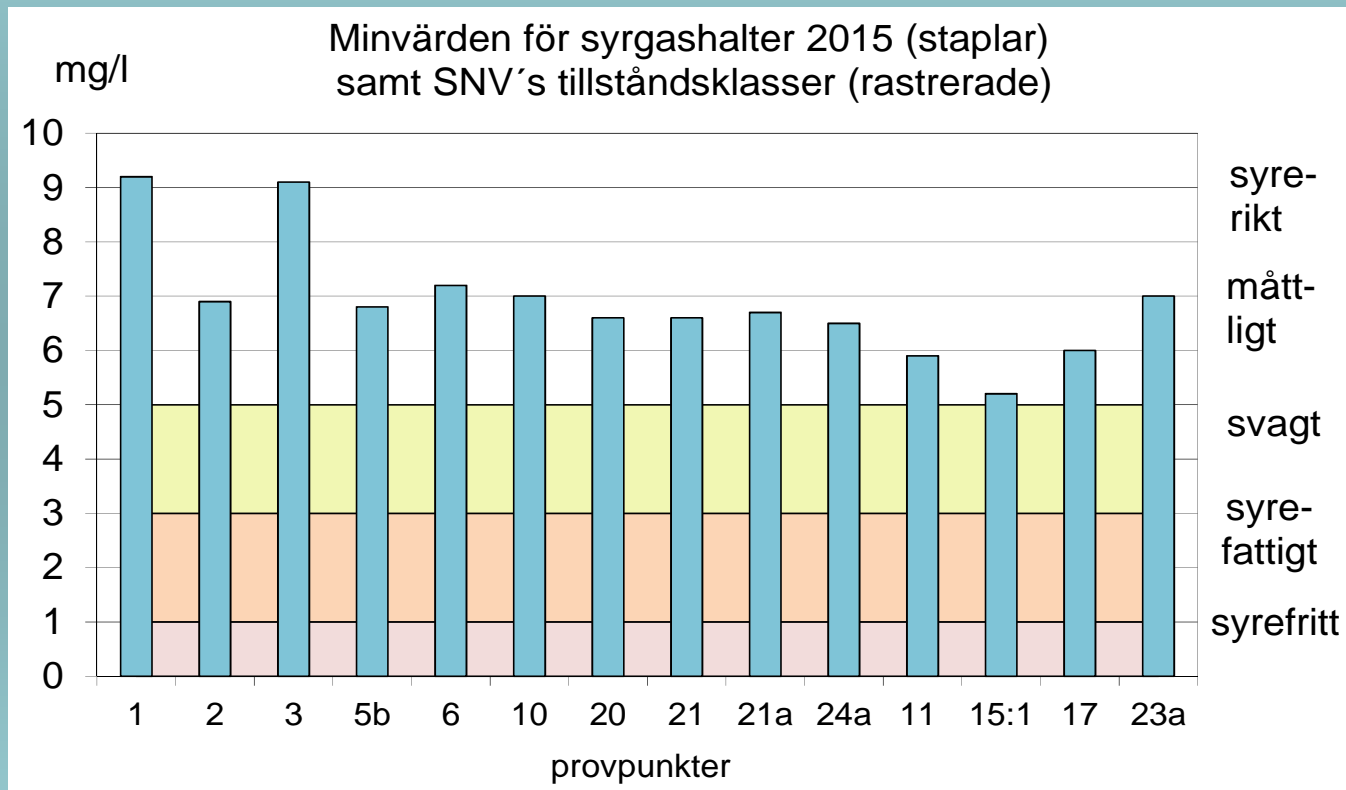
# Nederbörd och vattenföring



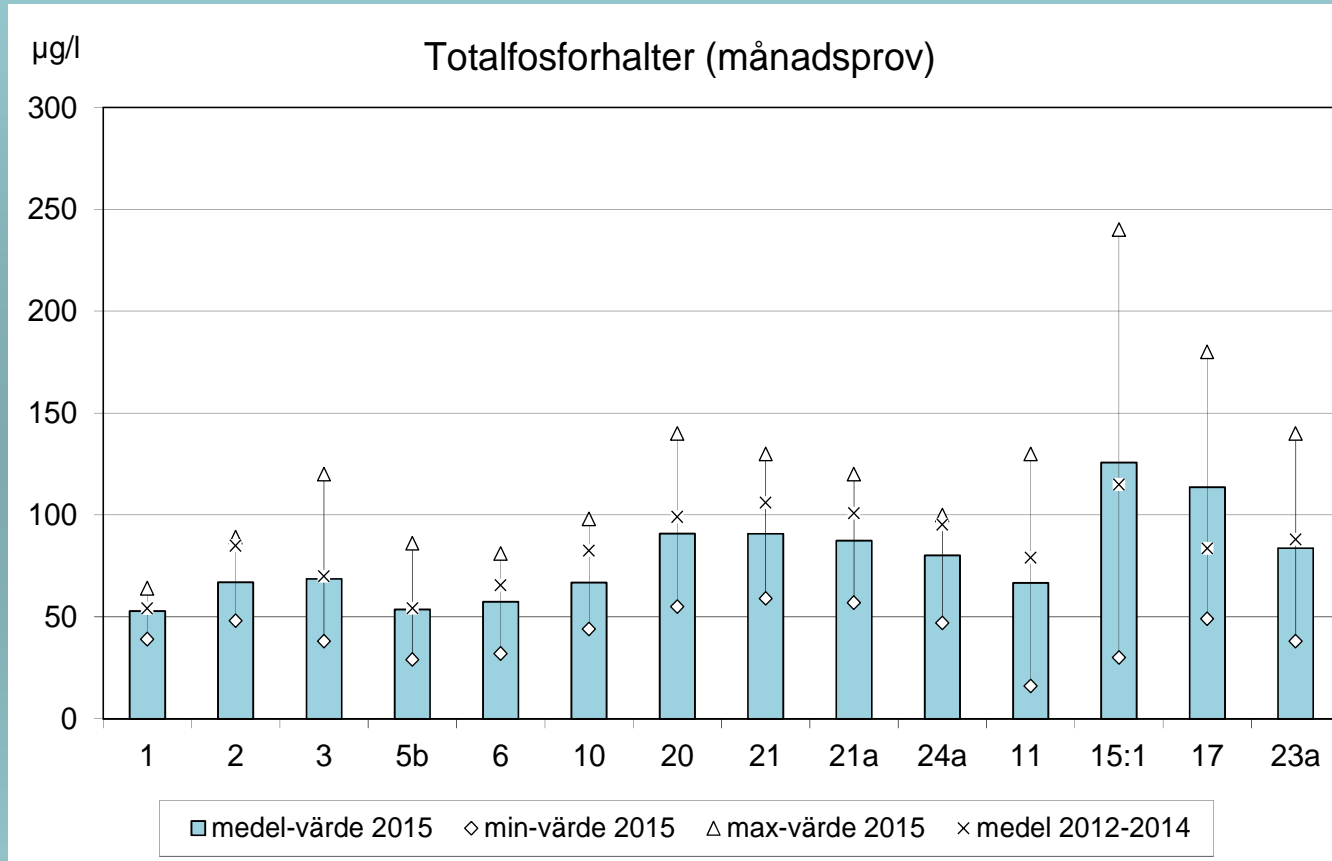


H20 Källby 28 dec

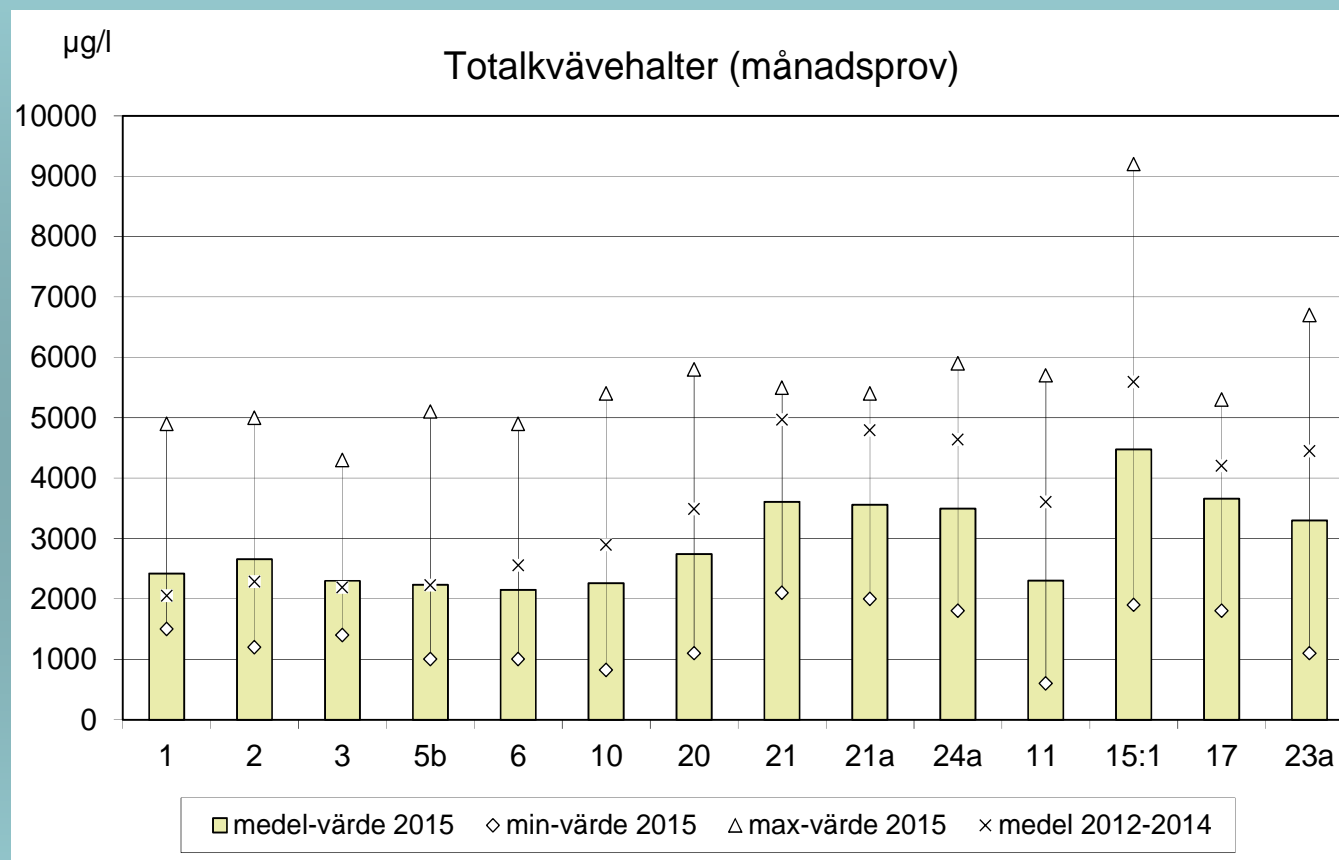
# Syrgastillstånd



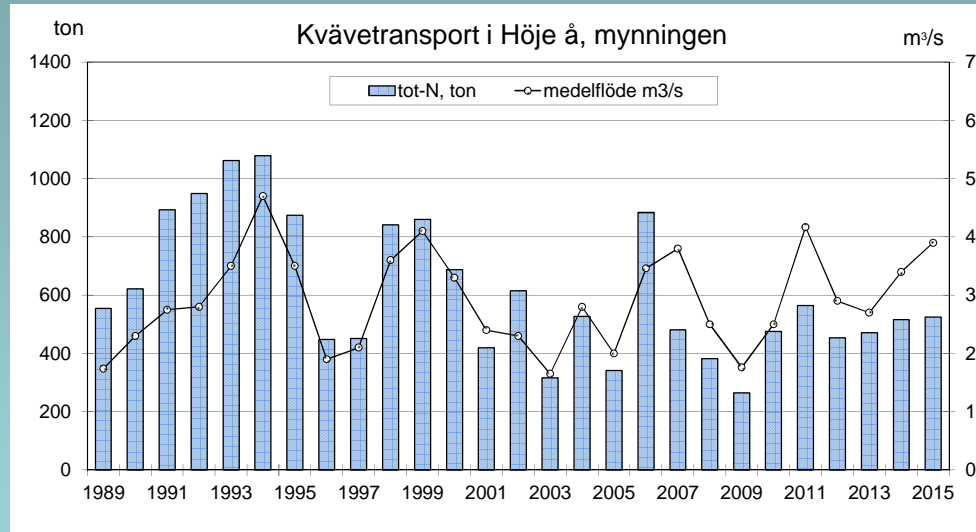
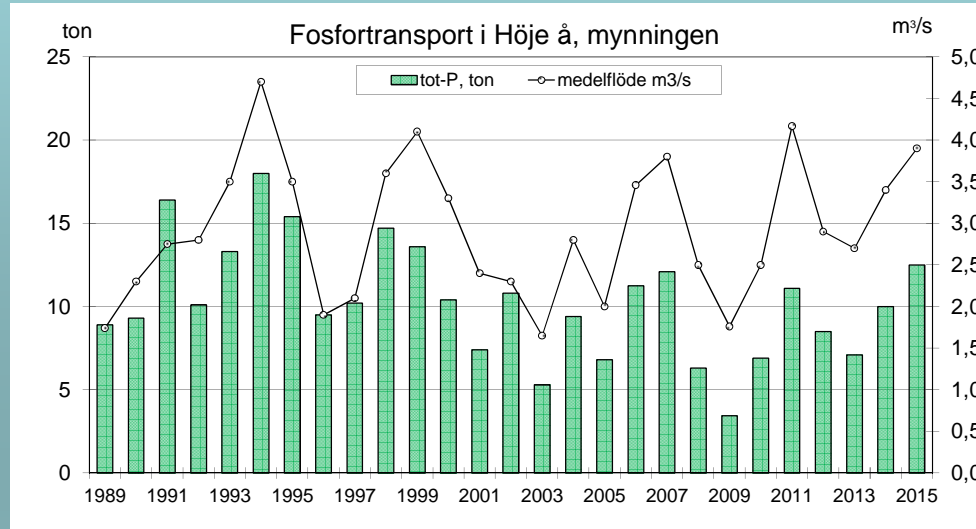
# Fosforhalter



# Kvävehalter

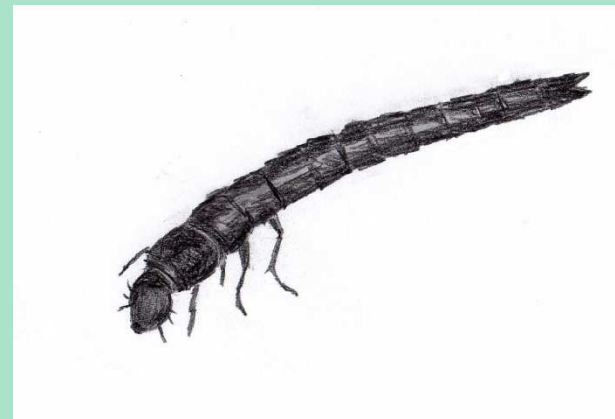
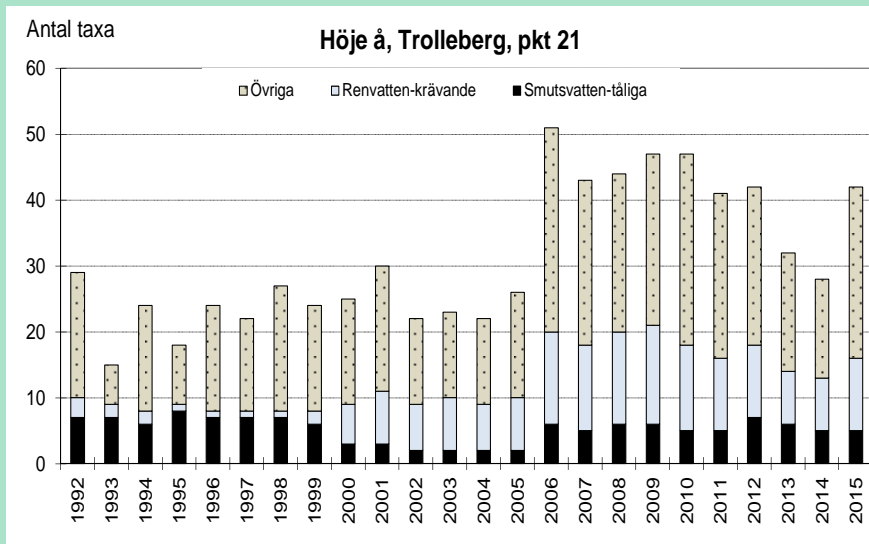
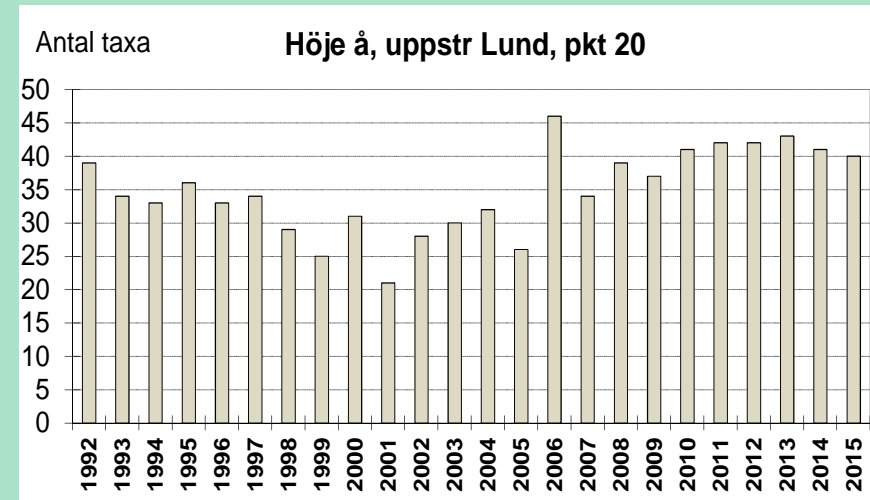
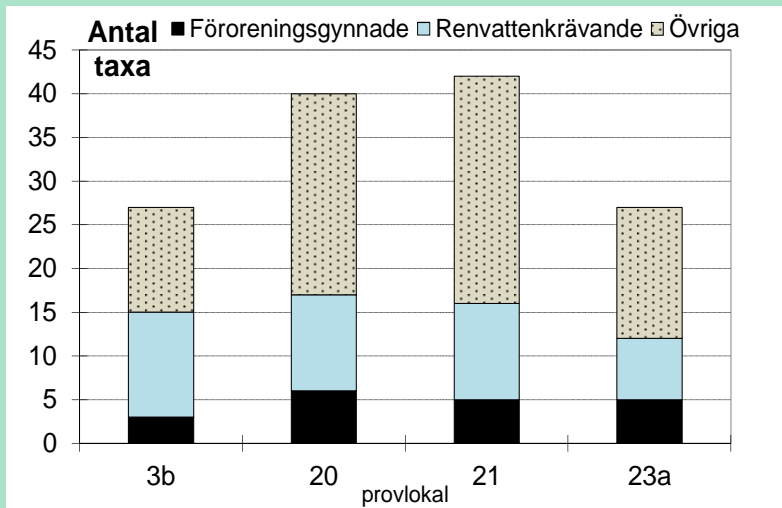


# Transporter



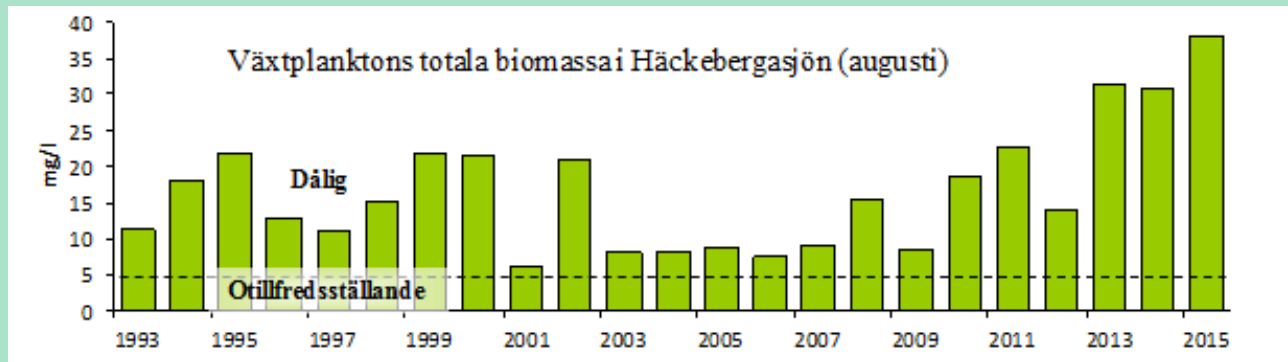


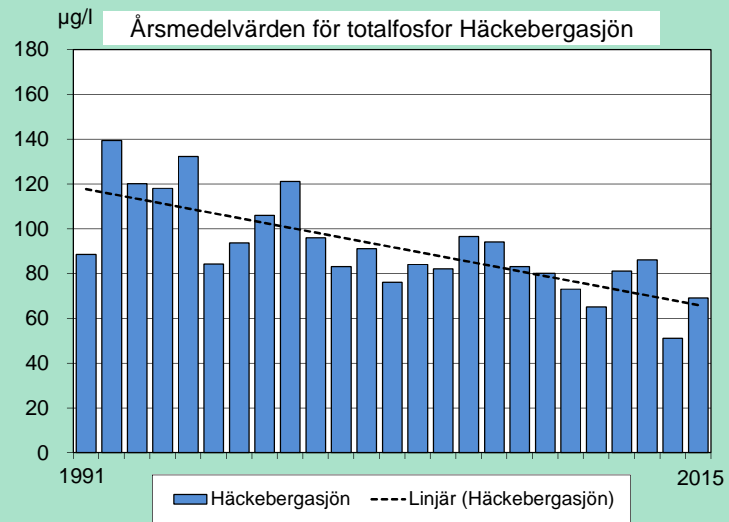
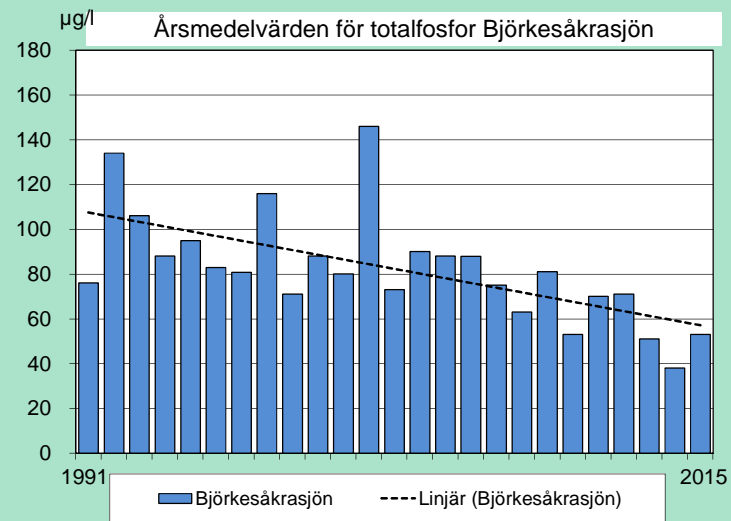
# Bottenfauna



# Plankton

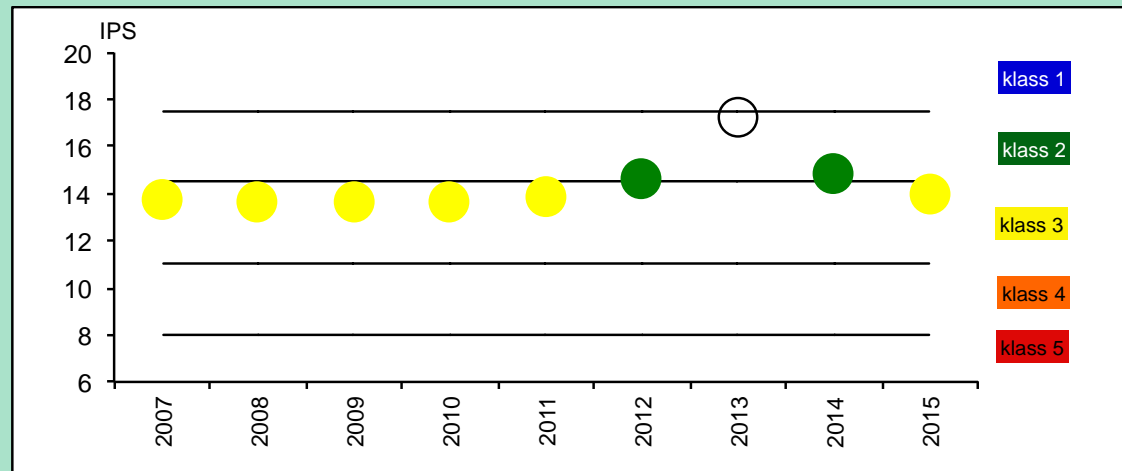
## Häckebergasjön



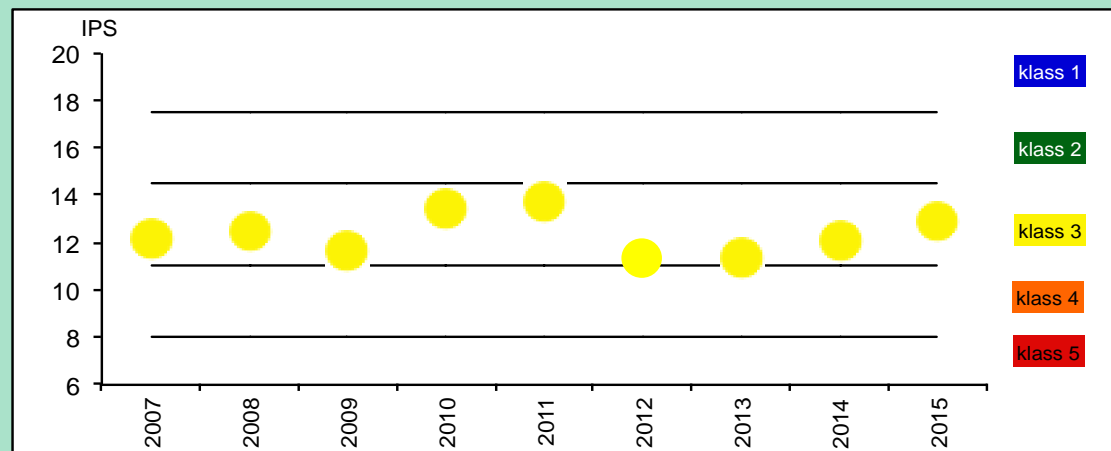


# Påväxt

## H3b



## H21





**SLUT**